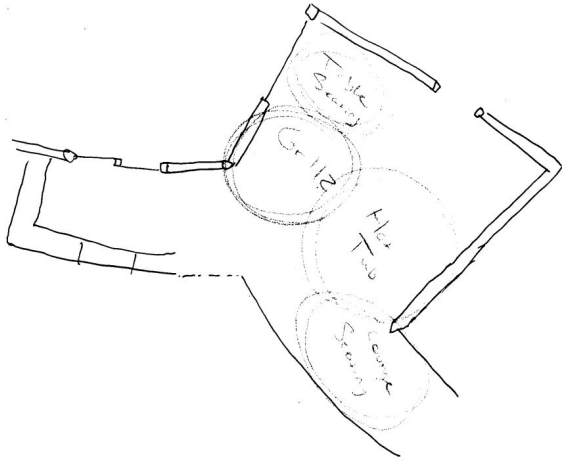


Logjam House : Spa Deck Design

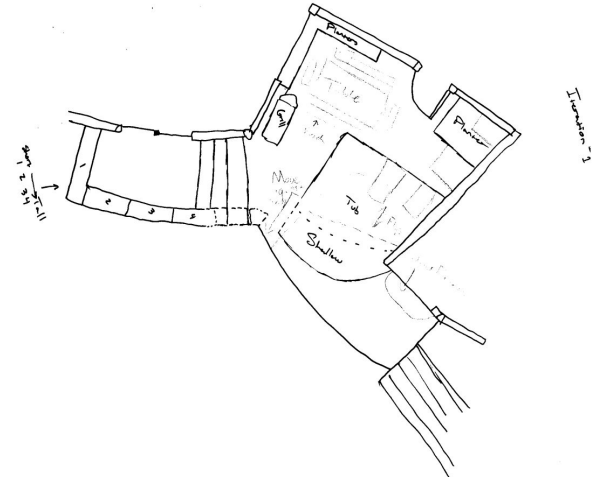
Jacob Gideon

Hand Drawn Process Work

While going about this design, I decided to extend the deck giving another access point from the kitchen. This gave more space and created more circulation in the design to feel less trapped in 1 area (giving room for more people). Using slight curves on the edge of the deck smooths the jagged line of the house.



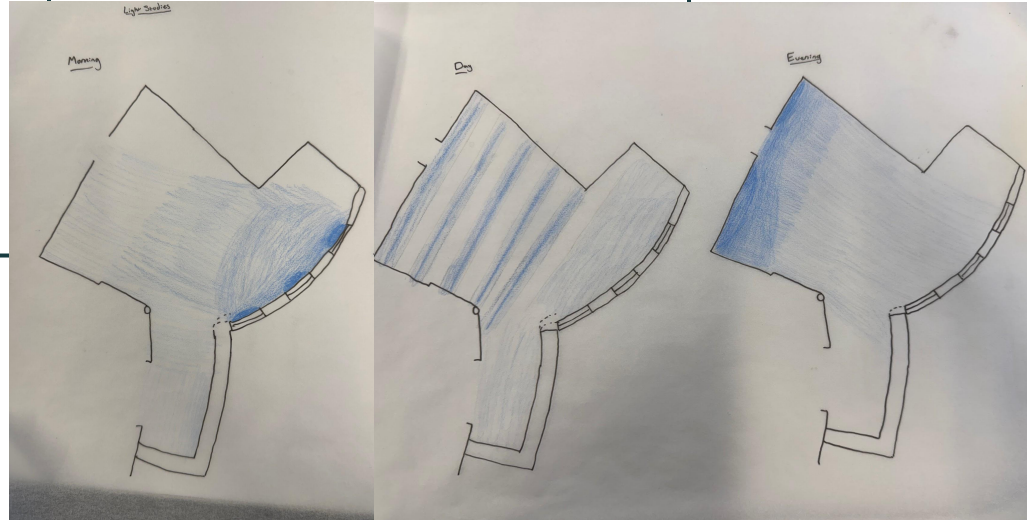
Space Bubbles



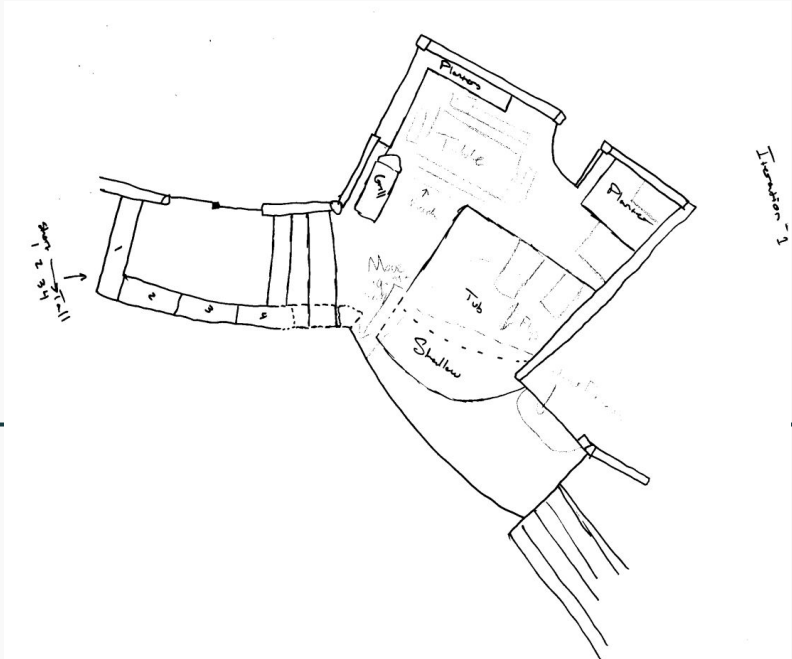
First iteration

Light Design

Here is the lighting shown throughout the day. As you can see, there is plenty of light during the morning and midday but when it gets closer to night it gets almost no light from the sunset, I decided to go with outdoor string lights to lightly fill the headspace while providing light to the deck and its occupants

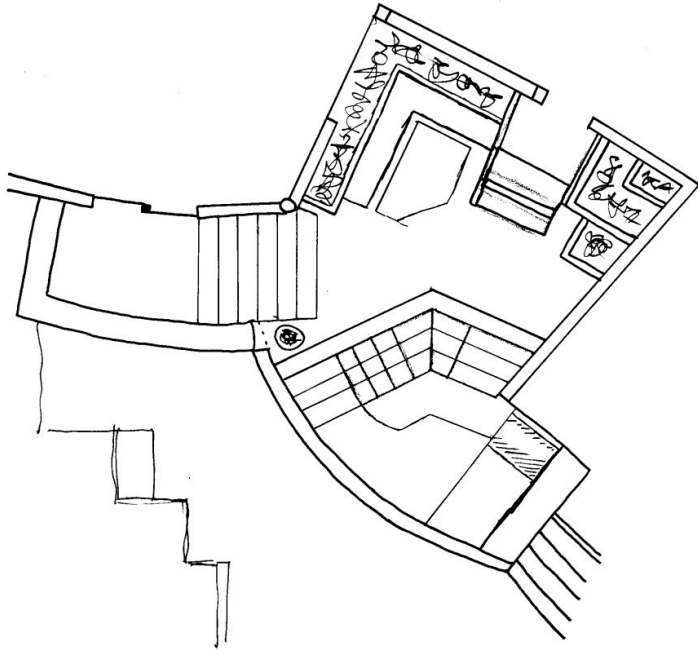


First Iteration



At first, I wanted to fit as much as possible into this design. I quickly realized space was limited and I would have to rethink a lot of factors such as the grill, table and seating, as well as the orientation of the hot tub

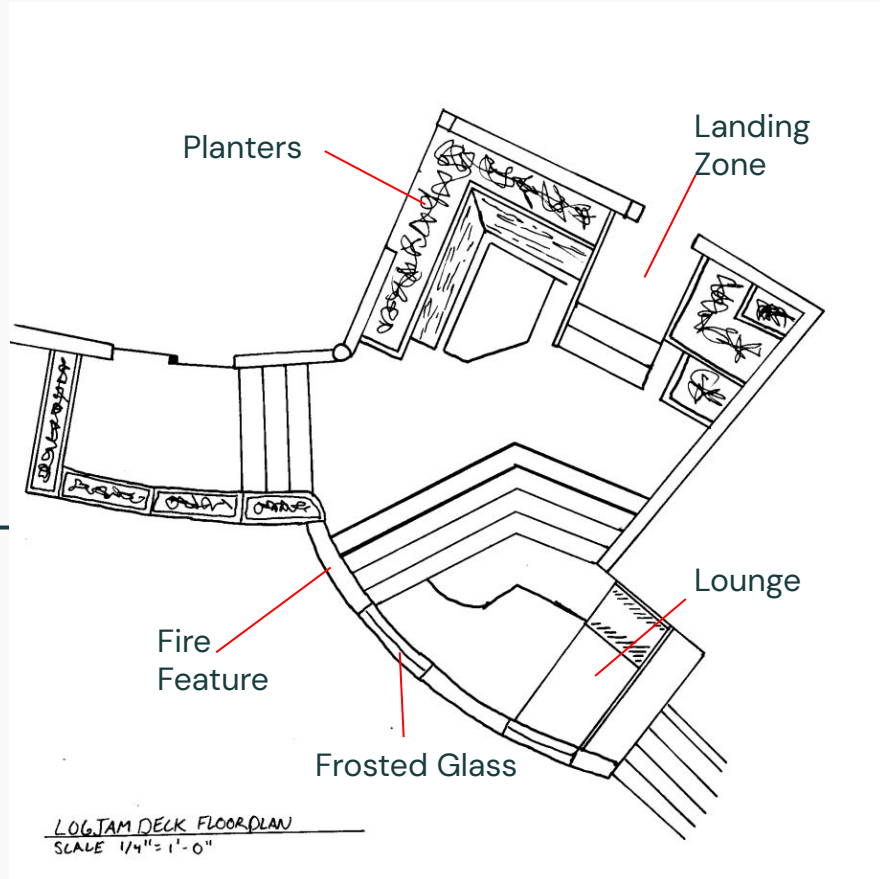
Further Developed



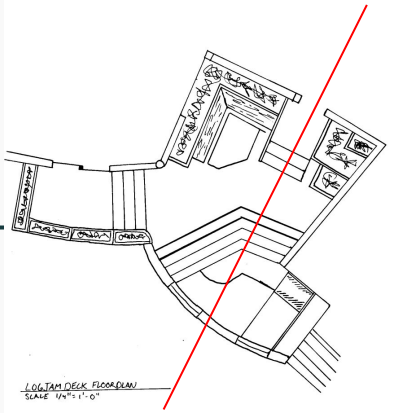
After a little more thought, I came to a design that gave more space to move around while keeping seating for multiple people. Realizing the door was higher than the deck itself, I created a short set of stairs. I also further developed the hottub, removing the slope in favor of stairs, giving more depth to the hot tub itself.

Final Floor Plan

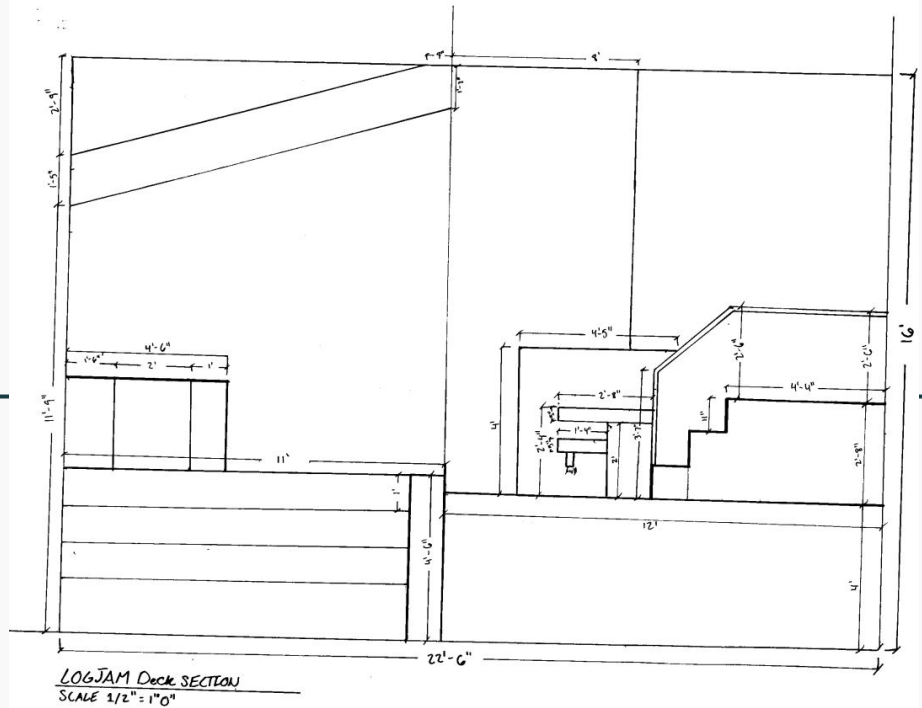
In the final plan, I cleaned up the design by adding more detail. Planters lining the walls to incorporate the nature of the surrounding area. I also kept the planter design lining the outside of the deck (half wall) but instead of plants I decided to add a fire feature separated with frosted glass.



Vertical Section

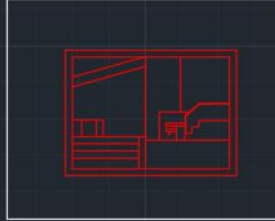


Deciding on where to cut my vertical section was a bit hard as I wanted to try and keep as much of the design as possible.



Dimensional Section

Draw your section with all the detail in this box first. Your section must fit in this box.



Section with a Horizontal Orientation

Layer 1



Layer 3



Layer 2



Layer 4



Select objects: